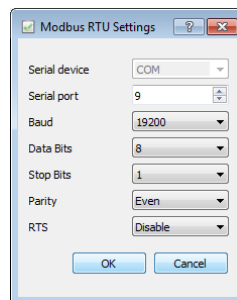


EM-Device settings

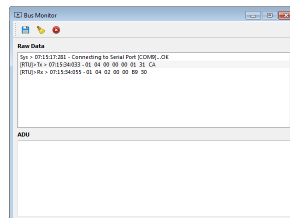
Protocol: Modbus RTU
 Baudrates: Default value **19200**
 Parity: Ddefault value **even**
 Stop bit: Default value **1**
 Slave address: Default value **1**
 RS-485: Two wire, half duplex

Computer with

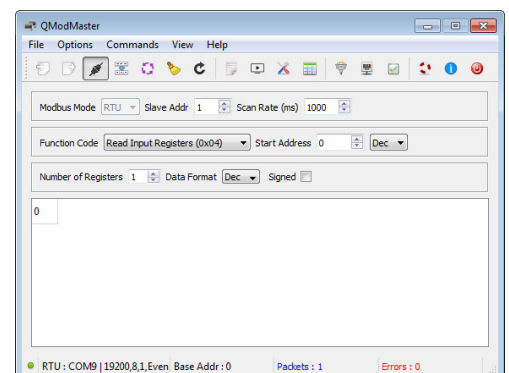
- Installed QmodMaster You can Download it <https://sourceforge.net/projects/qmodmaster/>
- USB-RS485 converter
 - for example <http://www.farnell.com/datasheets/652302.pdf>
- Connect EM-device to USB-RS485 converter
- Check COM port number on Windows settings
- Configure port settings on QmodMaster



- Open Bus Monitor on Qmod



- Connect Qmod
 - On busmonitor should says Sys > 07:15:17:281 - Connecting to Serial Port [COM9]...OK



- Try to read one input register (function 0x04)

Troubleshooting

- if Serial connection is ...OK
 - o Change RS485 wires A to B and B to A. Sometimes markings are not correct