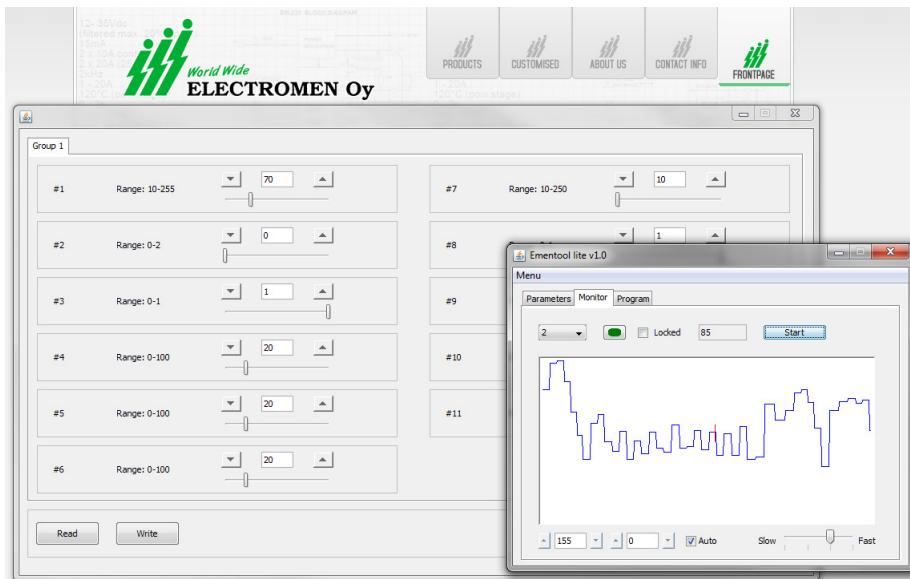


EMENTOOL LITE

User interface for EM-products



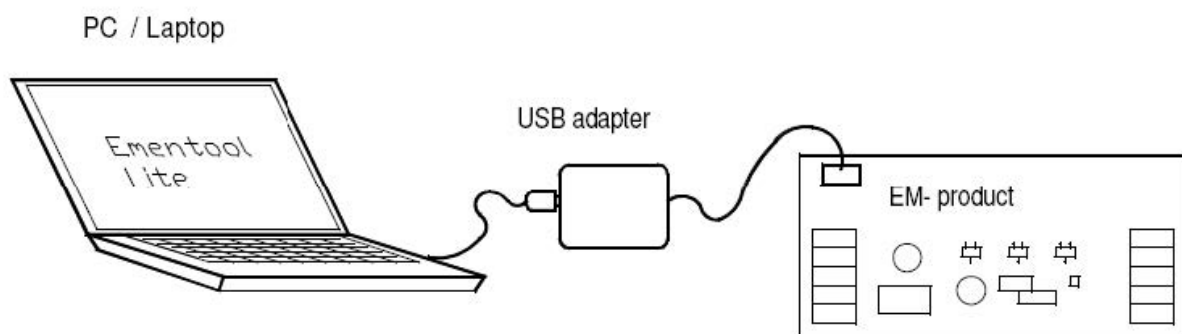
- parameter setting
- monitoring
- program update

Ementool Lite program can be used to set Electromen products and for program updates. The program has three main views: setting of the parameters, monitoring, and program update. The target device is then plugged to a computer normally by using a EM-328 USB adapter.

INSTALLATION

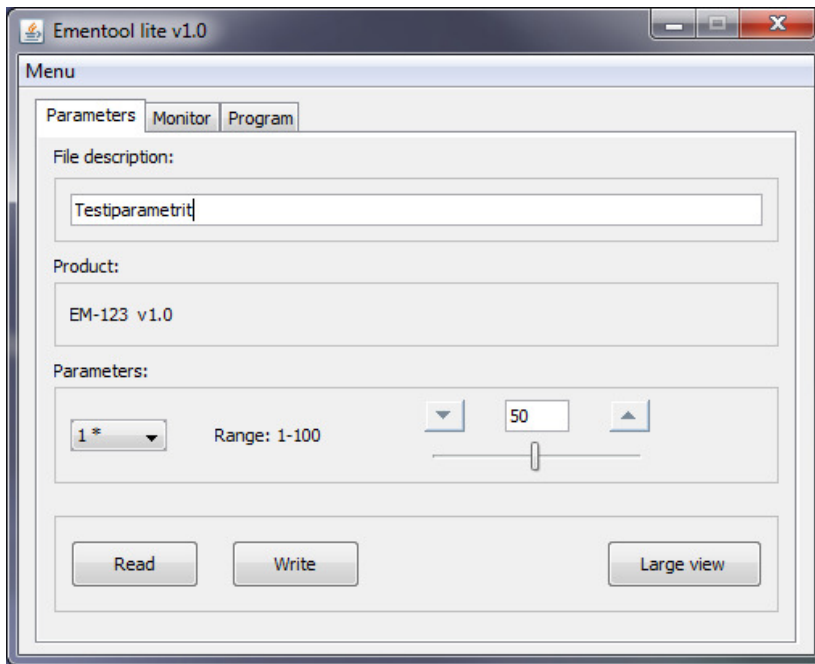
In order for the program to work, the computer must have a Java software installed which is already installed in most windows computers. If necessary it can be downloaded and installed freely from www.java.com.

1. Plug EM-328 adapter to the computer
2. Download the program <https://electromen.com/en/products/item/download>
3. Open/run *EmentoolLiteInstall_v1.0.jar* and install according to program's instructions.



Using

Plug EM-328 USB-adapter to the computer and connect the adapter's red connector to the target device's red connector. Start the program with an icon on the desktop and the view below should appear to the screen.



Parameters

After the program has started, a parameter setting view will open. By pressing read, the parameters are read from the target device and the connected device's name and version will appear on the "Product" field. "Write" will save the parameters to the target device's memory. In the basic view, you can only set one parameter at a time by choosing the adjustable parameter from the menu.

In the "Large view" the parameters can be set in groups of 12 units. Parameters can be printed by selecting "Print" from the menu and saved to computer by selecting "Save file as". When saving the file you can use the "File description" field to add additional information about the saved parameters.

Monitoring

By choosing the Monitor-tab, there can be select values for monitoring. The values are drawn as curves on the printing area. The traceable value is selected from the menu and tracking begins by selecting Start. Several values can be tracked simultaneously by choosing "Locked" and moving on to the next value. Drawing area's scale can be automated by selecting "Auto" or the area can be manually scaled by writing the scale values on the boxes in the screen's lower edge.

For a more accurate examination, the curve's drawing can be stopped by pressing stop and then the values can be examined accurately with a pointer. By clicking the mouse in the drawing area the pointer will appear on the curve and follows mouse movements. By pressing again the pointer will be locked. By right clicking the mouse, the pointer will be removed.

Program update

The program-tab is used to update the target device. Save the update file (file extension .epg) to Ementool lite's folder, c:\ementoolLite\epg. Open the update file by selecting "Select prog". The update file's name, version and date will appear on the title field. Start updating by selecting "Program". Once the update has begun it cannot be interrupted. During the update it has to be made sure that the card is not plugged off or that the power is not cut off. Otherwise the update may fail and the card can be corrupted. The update is ready when a "Programmed" text will appear on the field.