

# EM-82-35 VIBRATION TRANSDUCER

8235broe 6.6.2012



## FEATURES

- acceleration sensor
- 35g measuring range
- based on MEMS technology
- good stability
- linear frequency response
- wide supply voltage range
- internal buffer amplifier
- mechanically compatible with EM-82-50A
- electrically compatible with EM-82-50A up to 35g vibration level application

## GENERAL

EM-82-35 is acceleration sensor based on MEMS technology. The advantages of MEMS technology are good long term stability, shock resistance, stability and linear frequency response. Additionally thermal and time stability features are superior. The body of sensor is a aluminium, the sensor is molded to body with chemical aluminium. The housing class is IP67

## MOUNTING

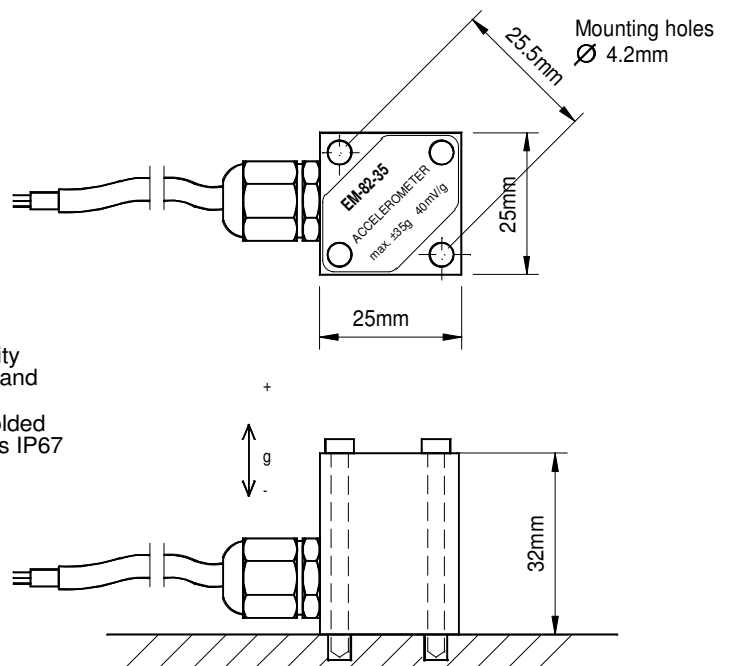
Mounting with two M4x40 screws.

## CONNECTIONS "habia cable"

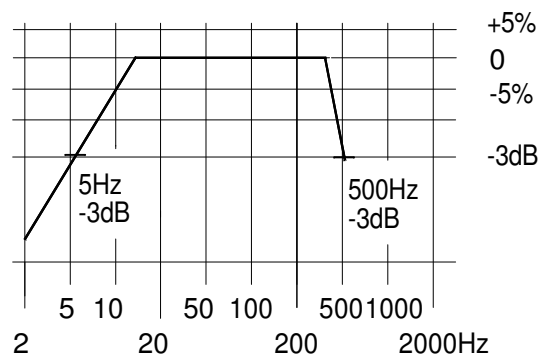
Supply	black
Signal	brown
Gnd	blue
Shield	shield

## TECHNICAL DATA

Operating voltage	7...30Vdc
Current consump.	7mA
Operating temp.	-20...105 °C continuos
Sensitivity	40mV/g ( $m/s^2 = 4.07mV$ )
Noise	2mV rms ( = 0.50m/s <sup>2</sup> )
Output offset	2.5V
Output swing	±1.4V ( 1.1 - 3.9V )
Detecting range	±25mg...35g
Frequency response	5Hz-500Hz +3dB
	10Hz-400Hz ±5%
	+3% ( 159Hz )
Accuracy	<0.05% / °C
Thermal drift	3m
Cabel lenght	25x25x35mm
Housing	IP67
Weight	appr .60g



frequency range  
EM-82-35



ELECTROMEN Oy

[www.electromen.com](http://www.electromen.com)